

Welcome!



Regional Transverse Myelitis Clinical Care Symposium: Focusing in on YOU



The Johns Hopkins
PROJECT RESTORE
Restoring hope, function, and lives to MS & TM patients

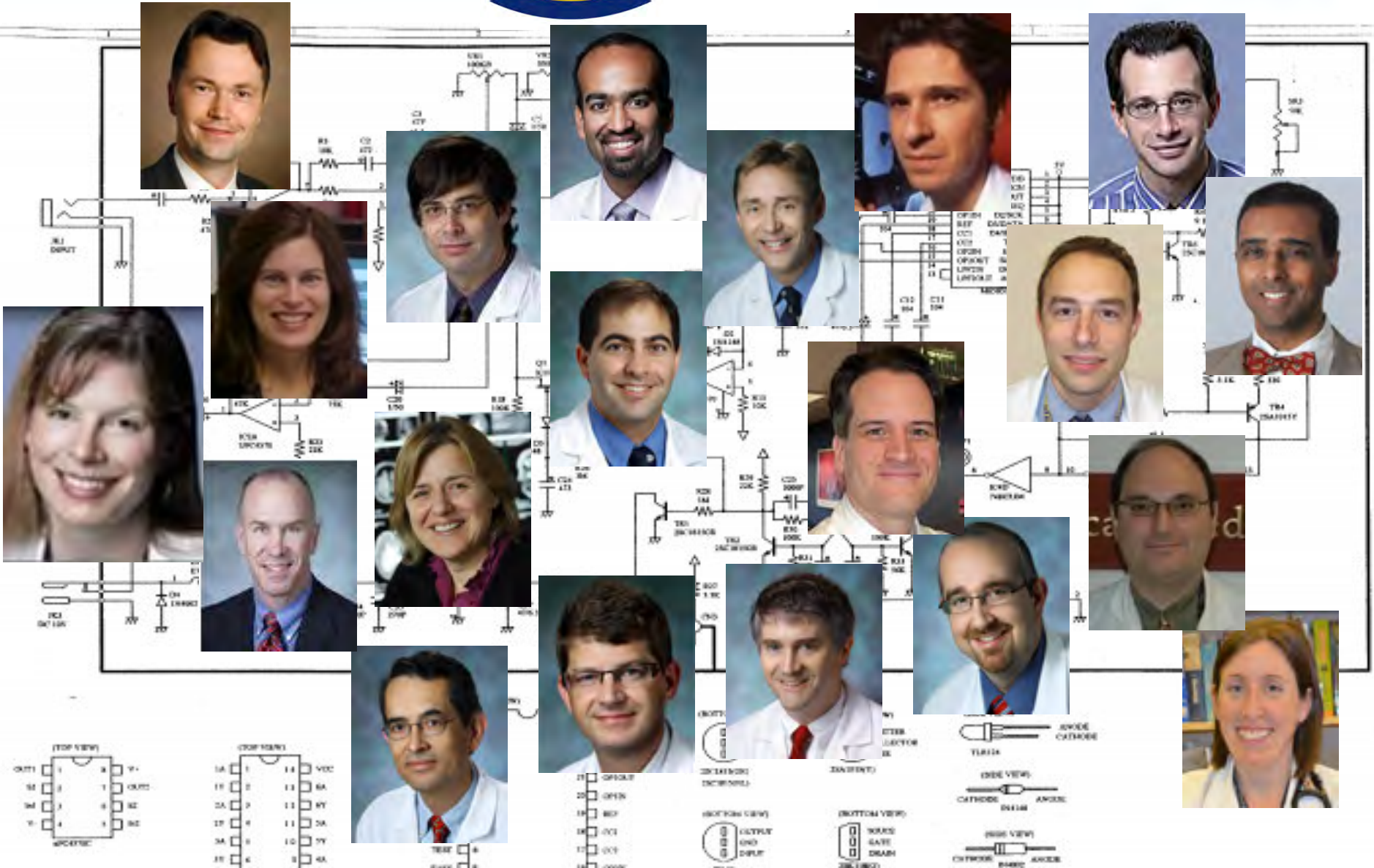


Kennedy Krieger Institute



The Transverse Myelitis
Association
www.myelitis.org

Our Team

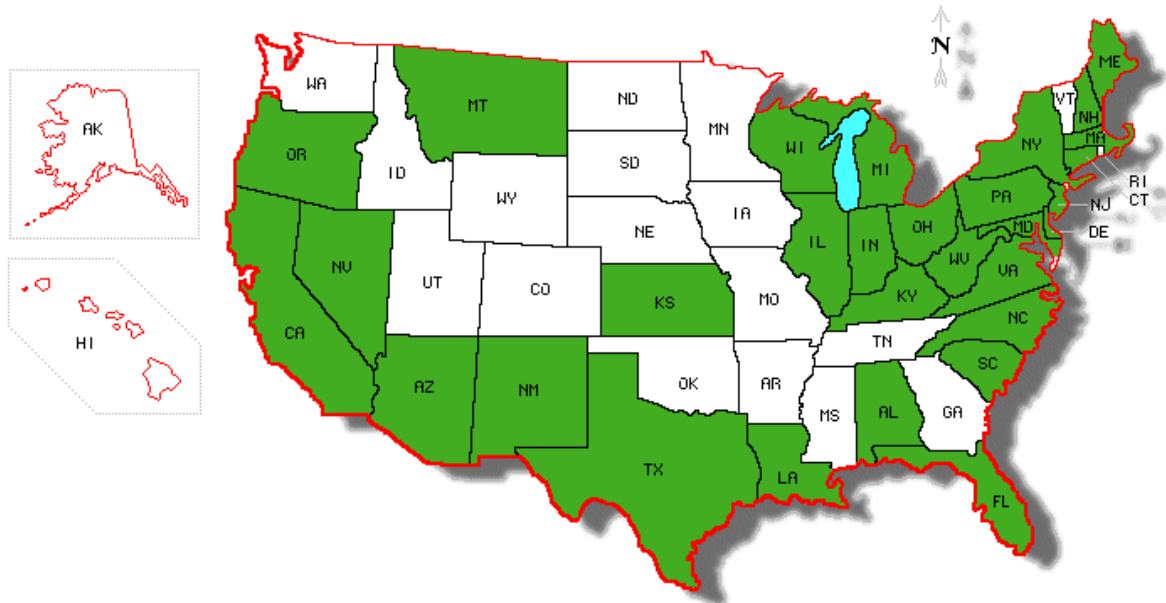




JOHNS HOPKINS
TRANSVERSE MYELITIS
CENTER



>300 Patients with suspected TM
were seen at the JHTMC in 2012



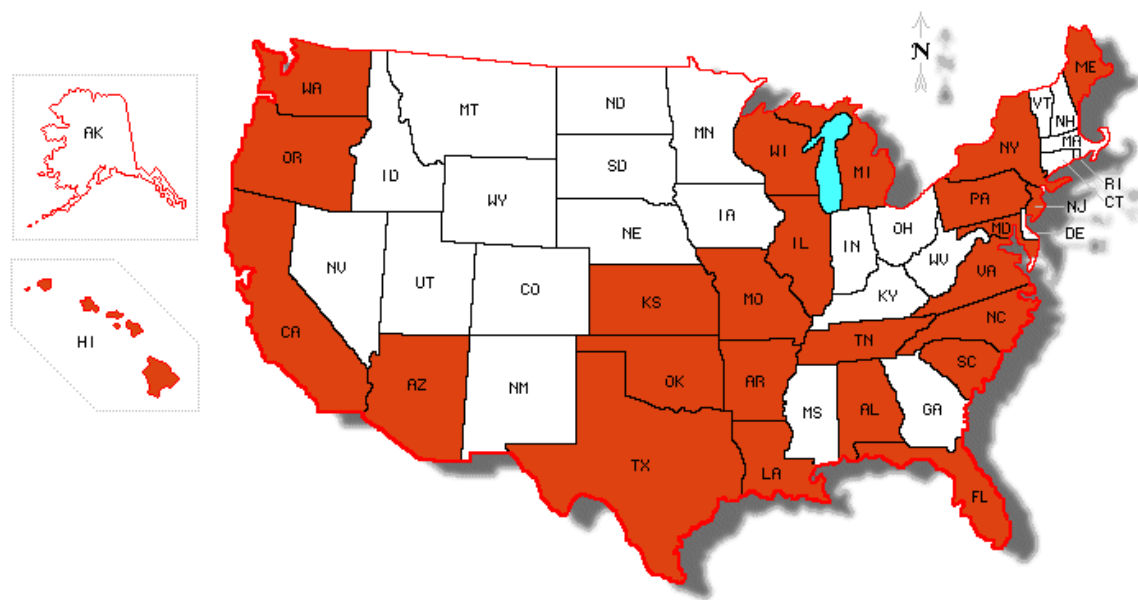




JOHNS HOPKINS

 TRANSVERSE MYELITIS

 CENTER



12-29-11

Origin Consultation Calls to the JHTMC in 2012



The Johns Hopkins
PROJECT RESTORE
Restoring hope, function, and lives to MS & TM patients

Project **RESTORE** stands for:

REcover

- Function
- From acute attacks
- From illness

STop

- Progression of disease
- Progression of disability

REgenerate

- Nerve cells
- Myelin

Goals of Project RESTORE



- Provide advanced care in the diagnosis and treatment of MS and TM
- Develop novel diagnostic strategies
- Develop, test and implement novel immunologic and restorative therapies
- Become a world leader in the education of patients and training of scientists and clinicians





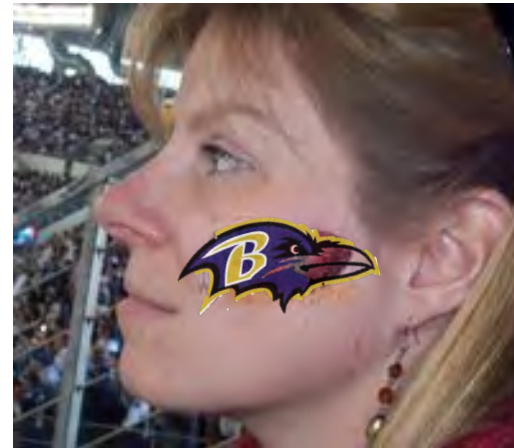
MISSION:

- To support and advocate for individuals and their families diagnosed with rare neuroimmunologic disorders .
- To promote awareness and to empower patients, families, clinicians and scientists through education programs and publications
- To advance the scientific understanding of and therapy development for these rare disorders by supporting the training of clinicians-scientists dedicated to these rare diseases and by supporting basic and clinical research

myelitis.org

Johns Hopkins TM Center

hopkinsTMcenter@jhmi.edu



Maureen A. Mealy, RN, BSN, MSCN, CNRN
Transverse Myelitis & Neuromyelitis Optica Clinical Program Manager
Neuromyelitis Optica Consortium Administrative Director;
Senior Research Nurse, Multiple Sclerosis & Transverse Myelitis Centers
410-502-8672 Telephone
410-502-6736 Fax

Regional Transverse Myelitis

Clinical Care Symposium: Focusing in on YOU



Depression/Mood Disorders in TM **Dr. Adam Kaplin**

Department of Psychiatry and Neurology
Johns Hopkins Hospital



Bladder and Bowel Management in TM **Janet Dean, PNP, Nurse Practitioner**

Kennedy Krieger Institute
International Center for Spinal Cord Injury

Regional Transverse Myelitis

Clinical Care Symposium: Focusing in on YOU



Activity Based Therapies to Improve Outcomes in TM

Dr. Daniel Becker

JHTMC & Kennedy Krieger Institute

International Center for Spinal Cord Injury



Activity Based Therapies to Improve Outcomes in TM

Dr. Kathleen Zackowski

JHTMC & Kennedy Krieger Institute

International Center for Spinal Cord Injury

Regional Transverse Myelitis

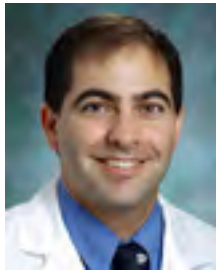
Clinical Care Symposium: Focusing in on YOU



Spasticity Management in TM

Dr. Robert Samuel Mayer

Department of Physical Medicine & Rehabilitation
Johns Hopkins Hospital



Breaking Research in TM

Dr. Michael Levy

Department of Neurology & Director of the
NMO Clinic, Johns Hopkins Hospital



Pain Management in TM

Dr. Scott Newsome

Department of Neurology, TM & MS Centers
Johns Hopkins Hospital